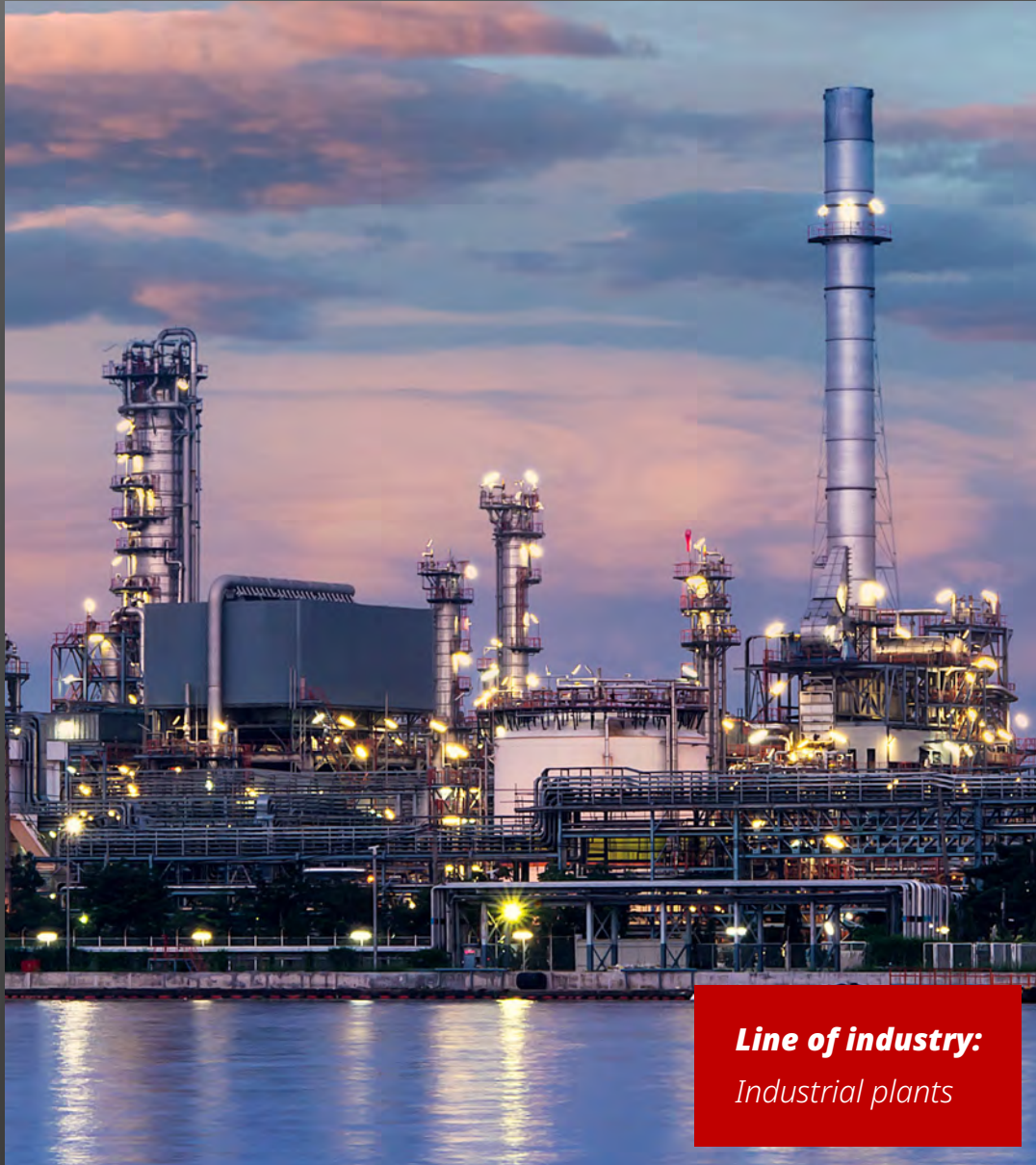


Connections made of steel.





THE PARTNER FOR INDUSTRY

Your project. Our products.

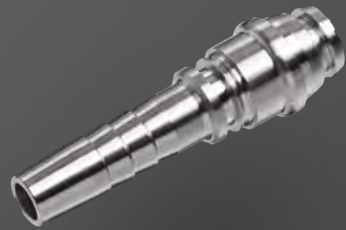
For over 60 years, WASI has been an expert, solution finder, idea generator, trailblazer and pioneer. Every one of our more than 170 employees gives their best every day, making it possible for everything to run smoothly – from initial contact to delivery. Together with you, we develop custom solutions for your special requirements.

Line of industry:
Industrial plants

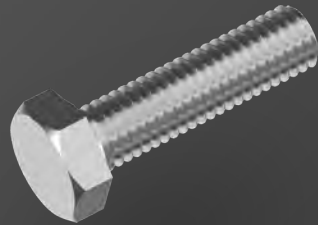
THE PARTNER FOR INDUSTRY

Everything for Your project.

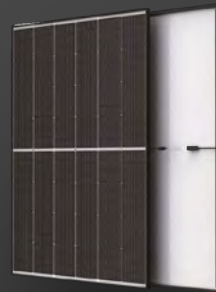
We offer many options to become your project a reality. In addition to DIN and standard parts, we can supply the desired special and drawing part according to your requirements.



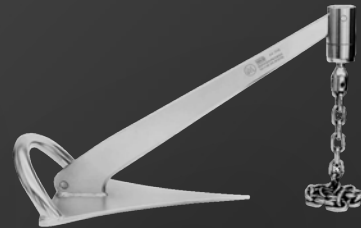
**Special &
drawing parts**



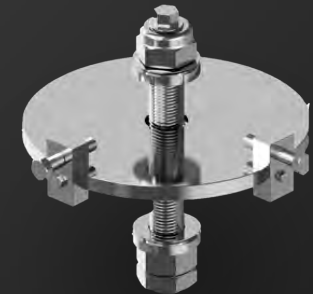
**DIN &
standard parts**



Solar



Maritime



**Installation
technology**

WIDE RANGE OF SERVICES FOR INDUSTRY

Everything for Your industry.

Stainless steel is an indispensable material in many industries due to its outstanding properties such as corrosion resistance, durability and aesthetic appeal. Special requirements in a wide range of applications make stainless steel a central material at the highest quality level for specialized solutions due to its versatility.

AGRICULTURE

INFRASTRUCTURE

CONSTRUCTION

FOOD INDUSTRY

CHEMICALS

MARITIME

ELECTRICS

MECHANICAL ENGINEERING

ENERGY

MEDICAL

BUILDING TECHNOLOGY

SANITATION

INDUSTRIAL PLANTS

FENCE CONSTRUCTION

AUTOMOTIVE

Key facts and figures

- 10+** manufacturing methods
- 20** coating methods
- 25** Countries
- 25** Suppliers

Quality promise

- +** tensile and compression test equipment
- +** contourograph
- +** Spectral analyzers

***You don't take
any risk with us!***

FOR MORE THAN 60 YEARS

Our expertise.

With many years of experiences and extensive expertise, we guarantee the highest product quality, reliable delivery times and tailer-made solutions that optimize your production processes and lead your projects to success. Our connections are designed to withstand the toughest conditions while meeting the highest safety and quality standards.

KNOW HOW SINCE 1961

Optimum engineering.

With more than 60 years of experience, we develop the optimal solution for you, both technically and cost-effectively, and meet all your required specifications.

Optimization of development and manufacture times

Choose the right material for your application

Extensive quality management

Choose the optimal manufacturing
process and coating



WITH MORE THAN 21,000 PRODUCTS

Our product ranges.

Standardized fasteners according to DIN and ISO are immediately available and of high, tested quality.

Tailor-made solutions according to customer specification, ideal for special application with special requirements.

Highly corrosion-resistant and durable fasteners for photovoltaic systems that can withstand extreme environmental conditions.

Products, not only for maritime use, that withstand salt water, permanently wet conditions and mechanical stress and offer the highest reliability



STANDARD



SPECIAL & DRAWING PARTS



MARITIME



SOLAR



INSTALLATION TECHNOLOGY

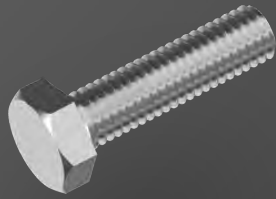
KNOW HOW SINCE 1961

Standard parts.

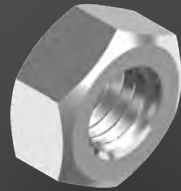


Fasteners made of stainless steel from A1 to A5 in all strength classes, from duplex 1.4462 and from various special materials.

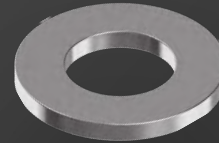
DIN, EN or ISO as well as all common international and WASI's standards



Screws



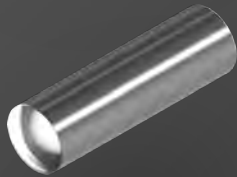
Nuts



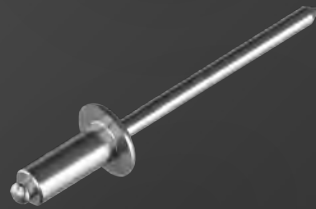
Washer



Locking elements



Pins



Rivet technology



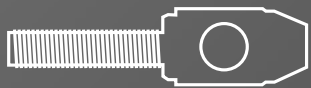
Fittings



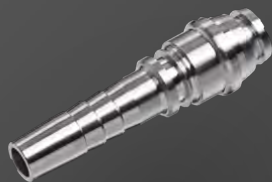
Anchors

KNOW HOW SINCE 1961

Special and drawing parts.



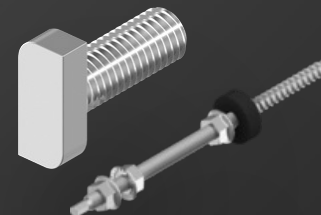
Special fasteners as well as custom drawing parts made of different materials and with special surface treatments.



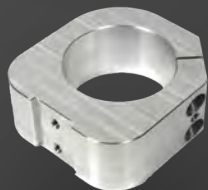
Turned parts



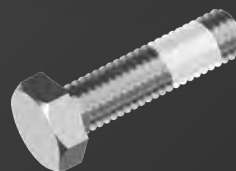
Punched & bending parts



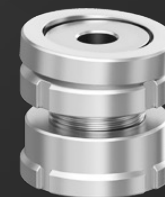
Cold- & hot-formed parts



Milled parts



Coated fasteners



Installation technology

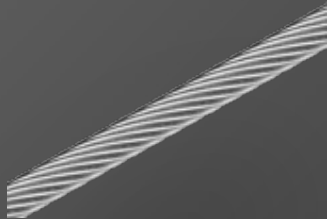
KNOW HOW SINCE 1961

Maritime.



We offer fasteners and other stainless steel products that can be exposed to extreme environmental conditions. Our marine stainless steel products are designed to withstand these conditions and provide the highest reliability.

Premium products made of stainless steel, primarily for marine use.



Wire ropes



Chains



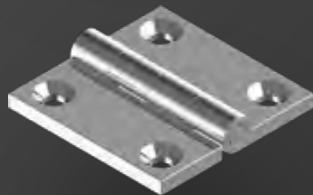
Boat accessories



WASI anchor gear (GTS)



Metal fittings



Hinges



Bolts, hooks & locking elements



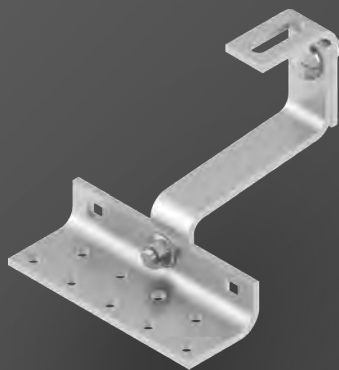
Pipe accessories

KNOW HOW SINCE 1961

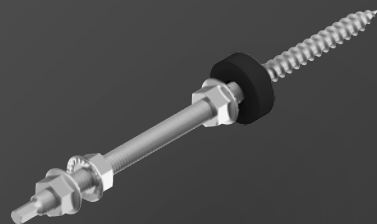
Solar.

The solar industry makes high requirements on materials and connection technology used in photovoltaic systems. Our stainless steel products are specially designed to withstand the extreme environmental conditions and stresses of this industry.

Stainless steel and aluminum mounting solutions for all common roof structures.



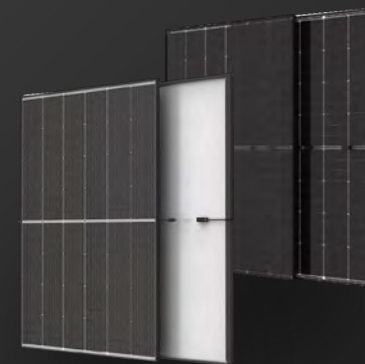
Roof fasteners



**Screws, accessories
& much more**



**Rails for roof
mounting**



**Various solar
modules**

KNOW HOW SINCE 1961

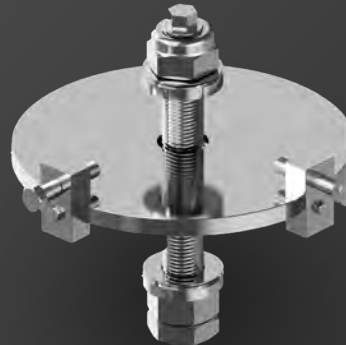
Installation Technology.



Height adjustment elements allow you to adjust, connect, level or permanently fix your machines in place. The high load values and the anti-turning feature make WASI's installation technology extremely versatile. It allows for precise height adjustment of machines, power units, racks, drives bearing and more.



Height adjustment elements



3D height adjustment
elements



Machine feet

MANY POSSIBILITIES THAT MAKE EVERYTHING EASY

Our modern and digital procurement solutions.

Today, you have numerous procurement options at your disposal. Our comprehensive services offer you flexibility and tailer-made solutions that are perfectly tailored to your needs.

WASI-SC@N

Due to innovative technology you can reduce the time required to procure WASI products.

EDI

Automated processes from order to invoice through EDI connection.

Ordering system

In addition to WASI products, you can also manage any products form other divisions with our Kanban system.

Webshop

Order more than 21,000 products 24/7. You will always receive the current information, prices and availability.

FACTS AND FIGURES

WASI *logistics.*

11,000 sqm of covered storage area

35,000 container bays operated via a shuttle system

16,500 storage spaces for pallets

200,000 total container bays



WASI
logistics center

INDUSTRY KNOW-HOW

Logistics services.

Our logistics service is designed to meet your needs. We offer a comprehensive range of services to ensure that your orders are processed on time, safely and efficiently.



Custom packaging & labeling

More than 1 million packaging units pre-assembled according to individual customer specifications.



Drop shipping

Skip our product range in your own package design. We already process 250 orders a day.



Kanban system

Simple, scanner-based ordering system, material supply to production according to your needs and shelf management at your production sites.

Our services.

Worldwide delivery

We deliver quickly to more than 80 countries.

Solution finder

Solutions are always tailor-made for you.

WASI-APP

Simply order via the app or find out more.

High quality

For us, industry standards are not enough. We deliver the best quality.

Sustainability

WASI takes care of the environment and saves CO₂. 2,500 solar modules generate up to 75% of the electricity required on site.

Forward-looking

Our product management is always working on new technologies for the future.

WASI-SC@N

Scan and order from your warehouse.

+60 years of experience

We have been there for our customers since 1961.



**Administration
& logistics in
Wuppertal**

CONTACT

***Get in
touch.***

Address WASI-Str. 1, 42287 Wuppertal

E-Mail info@wasi.de

Website www.wasi.de

Phone +49 (0) 202 2632 - 0

Fax +49 (0) 202 2632 - 407